

# Alaska Portable Headquarters Housing & Logistics Services

Fairbanks, Alaska - [www.AKPHQ.com](http://www.AKPHQ.com) - 907- 458 - RENT (7368)

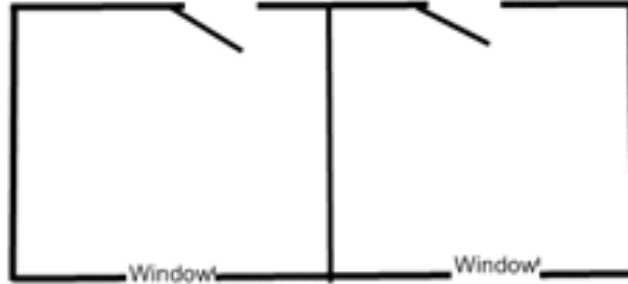


Fleet Floorplans - Currently in Stock Jan. 2011

## SAMPLE **ATCO Type BUILDING** FLOOR PLANS – 28' – 40'

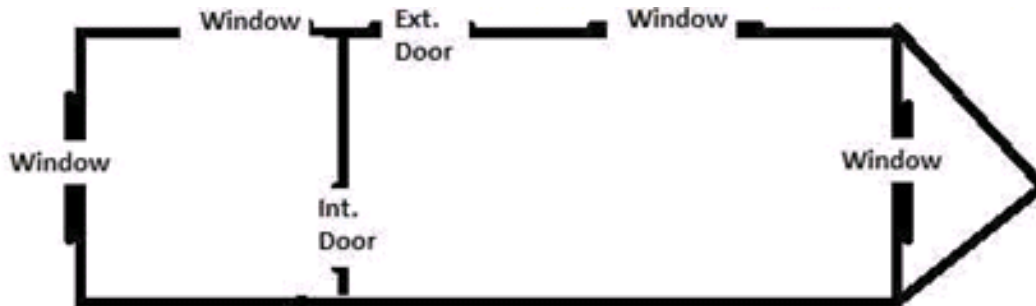
All models may not be the same – NOT TO SCALE

ATCO Type Buildings – Some on wheels, some on skids



28 x 10 Atco Type Buildings - 2 Rooms for Bedrooms or Offices, etc. on skids - not to scale

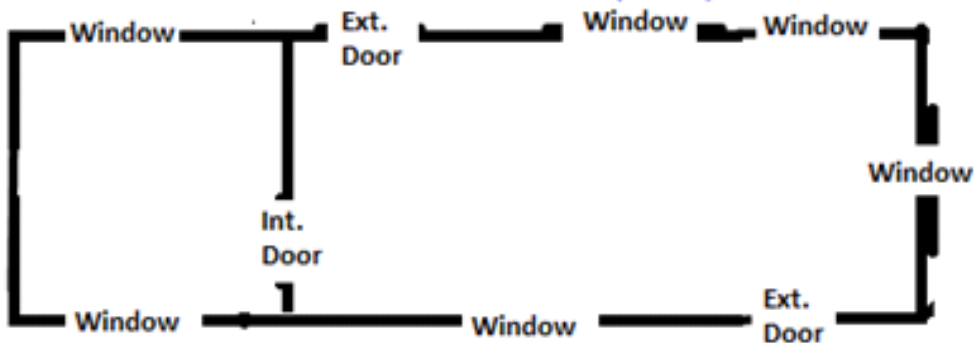
Nicknames: "Umiat I" and "Umiat II"



Unit Nickname  
"Wiseman"

Plug n Play - electric - 2 x 20amp circuits in fuse box - may be expanded.

Has pigtail for hookup to onsite outlet. 110V or 220V On Wheels for easy Transp



Unit nickname:  
"Chitina"

Plug n Play - electric -

Has 20 amp pigtail for hookup to onsite outlet.

110V or 220V On Skids